

A.B. CAP

ARRESTER BRACKET WILDLIFE GUARD

Central Moloney, Inc.
Components Operation
An ISO 9001:2000 Certified Company

Product Data Sheet

File No. PDS1034	Issued: April 15, 2006
Availability: Immediate	Supersedes: August 15, 2003

Introducing The 'A.B. CAP'

Introduction

Central Moloney Components, a leader in molded components for the electrical distribution industry, is proud to introduce the A.B. Cap, *a new product to reduce wildlife outages associated with transformer mounted polymer style arresters.*

With input from utility linemen, the A.B. Cap was designed to solve the problem of outages caused by wildlife perched on the arrester mounting bracket making contact with energized conductor.

For improved lightning protection, many utilities have switched to tank mounted primary arresters on their distribution transformers. This brought additional energized cabling and terminals into the vicinity of the transformer. Utilities have identified one of the most common outage problems associated with these tank mounted arresters to be wildlife perched on the grounded mounting point of the polymer arrester to the metal mounting bracket.

Although insulating caps of various styles have been furnished with polymer arresters, they have not proven effective in preventing contact with energized parts. Due to their small size and openings for various leads, animals often are able to make contact with the high voltage.

The A.B. Cap is an effective, cost efficient, solution for preventing these types of outages.



Fig. 1 - A.B. CAP

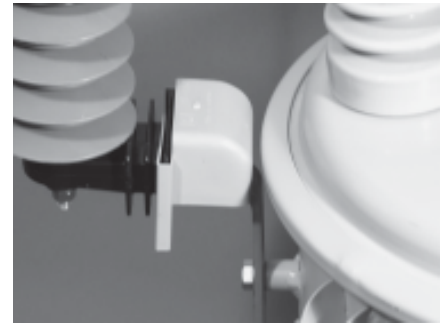


Fig. 2 - A.B. CAP APPLICATION

Design

The A.B. Cap mounts easily and securely over the last insulating rib on the polymer arrester mounting bracket. It effectively covers the mounting bolt and end of the metal mounting bracket with high dielectric material to prevent flashover.

Without the use of cumbersome latches, tie straps, or tape, this innovative design fits brackets from all common polymer arrester suppliers. Flexible fingers securely hold the cap in place, yet it can still be easily removed for reuse.

The A.B. Cap has been tested to withstand voltage up to 21 KV to ground without flashover.

An important design feature of this cap, which can be as effective as the insulating value, is the smooth, rounded profile. This feature has proven to act as a perch deterrent since most wildlife will select smaller radius surfaces to perch on.

The A.B. Cap is molded from premium grade, track resistant, UV stabilized polypropylene copolymer for excellent durability even in harsh environments. This material has been used by CMI for over 18 years in a multitude of outdoor products with excellent field history.

Application

The A.B. Cap can be installed by the transformer manufacturer at time of shipment, by the utility upon installation of the transformer, or by the utility on existing installations. If installed on energized equipment, safe live line practices must be followed.

It is common practice on arresters installed by the transformer manufacturer to ship the arrester pivoted toward the tank to prevent damage in transit. If A.B. Caps are supplied installed on the arrester, they can easily be removed and reinstalled after the arrester is pivoted outward and tightened.

Another
Innovative
Product
From CMI!

U.S. Patent # 7, 009, 102

A.B. CAP - ARRESTER BRACKET WILDLIFE GUARD

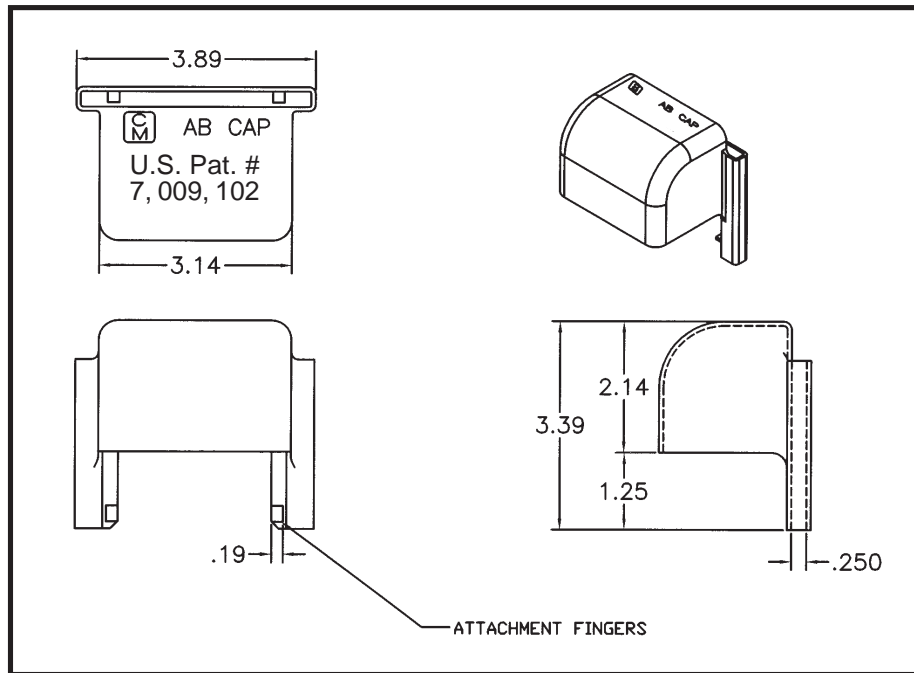


Fig. 3 - Part Outline

Features

- Effective, cost efficient means of insulating wildlife from ground potential at the mounting of the polymer arrester bracket to the metal transformer mounting bracket
- Universal design fits all common brands of polymer distribution class arresters
- Easy snap fit installation – no tape or tie wraps required
- Rounded surface serves as a perch deterrent
- Provides flashover protection up to 21KV
- Premium grade weather resistant polypropylene copolymer material

Ordering Information

Part Number - 70380349
Standard Box Count - 100 or 250

Central Moloney, Inc. Components Operation

An ISO 9001:2000 Certified Company

5500 Jefferson Parkway Pine Bluff, Arkansas 71602 Tel. 870-247-5320 Fax 870-247-5369
E-mail: info@cmicomp.com Website: centralmoloneyinc.com